

# HERA Hyperspectral Camera **VIS-NIR 400-1000 nm**

HERA IPERSPETTRALE is a compact and rugged hyperspectral camera that enables an innovative approach to spectral imaging.

With its unique and patented technology based on time-domain **Fourier Transform** detection, HERA provides an **exceptional spatial-spectral resolution** and a superior **sensitivity** in low-light illumination conditions.

## Key Features

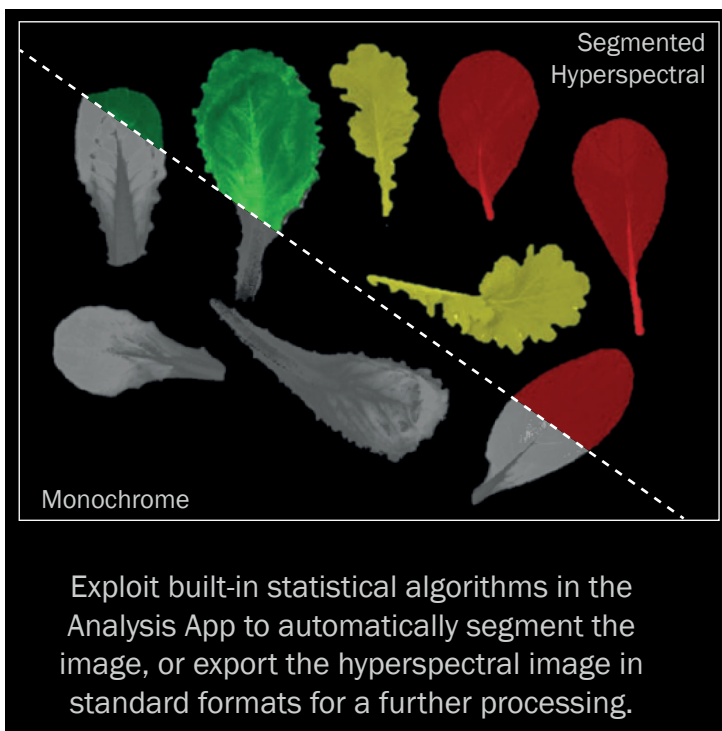
- High spatial & spectral resolution
- High sensitivity and throughput
- Compact and lightweight
- Export data in ENVI format
- User friendly software (measurement & data analysis)

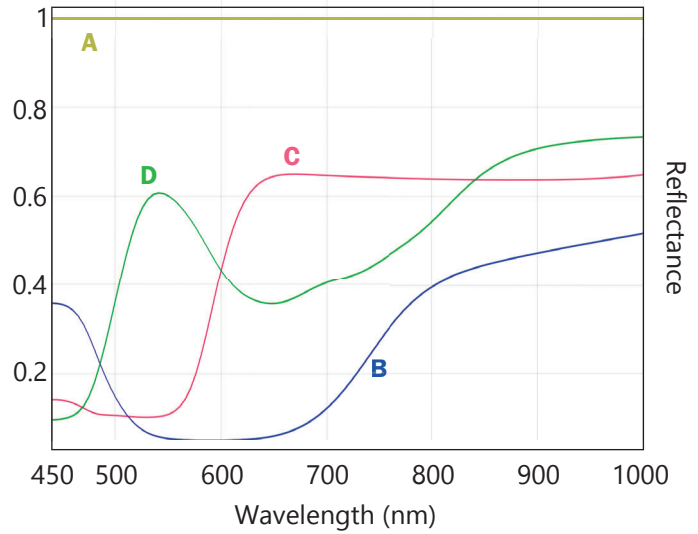
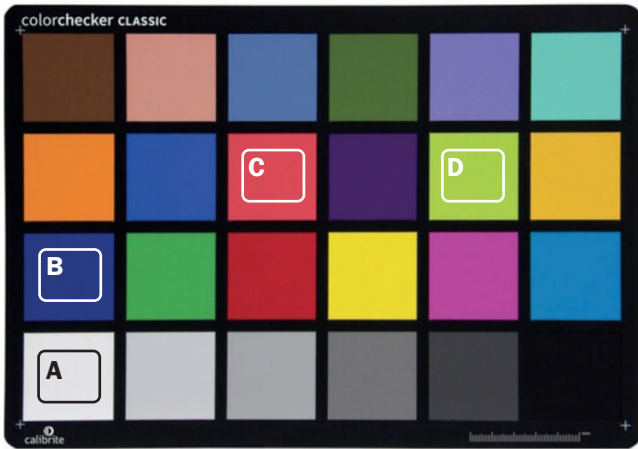
## Applications

- Fluorescence imaging
- Sorting of materials
- Biology and Microbiology
- Agriculture and food quality
- Microscopy
- Art Conservation
- Forensics

## Customer Benefits

- Ease of use: place it on the tripod, **point it to the sample and measure**
- The high throughput ensures high-quality data even at the lowest light dose
- Portable, plug and play device





Hyperspectral Image of a ColorChecker reference sample. (1) RGB reconstruction from the hyperspectral image, and (2) reflectance spectra relative to the selected areas in (1).

## Technical specifications

|                                     |                                      |
|-------------------------------------|--------------------------------------|
| Spectral range                      | 400 - 1000 nm                        |
| Sensor spatial resolution           | 1280 x 1024 pixels                   |
| User adjustable spectral resolution | <1.5 nm @ 400 nm<br><10 nm @ 1000 nm |
| Sensor                              | CMOS                                 |
| Number of bits                      | 12 bits                              |
| Software interface                  | Labview based interface              |
| Number of spectral bands            | $\infty^*$                           |
| Field of view                       | 8 degrees**                          |
| Working distance                    | 1 m - $\infty$                       |
| Dimensions                          | 205 x 150 x 83.5 mm                  |
| Weight                              | 2 kg                                 |
| Minimum Computer Requirements       | 16 GB RAM, SSD drive suggested       |

\* HERA is FT spectroscopy based instrument and number of spectral bands is software selectable and independent from measurement time

\*\* The Field of View can be doubled (up to 16 degrees) by adding an optional lens in front of the camera

Customization upon request:

HERA can be customized to be compatible with commercial microscopes.